

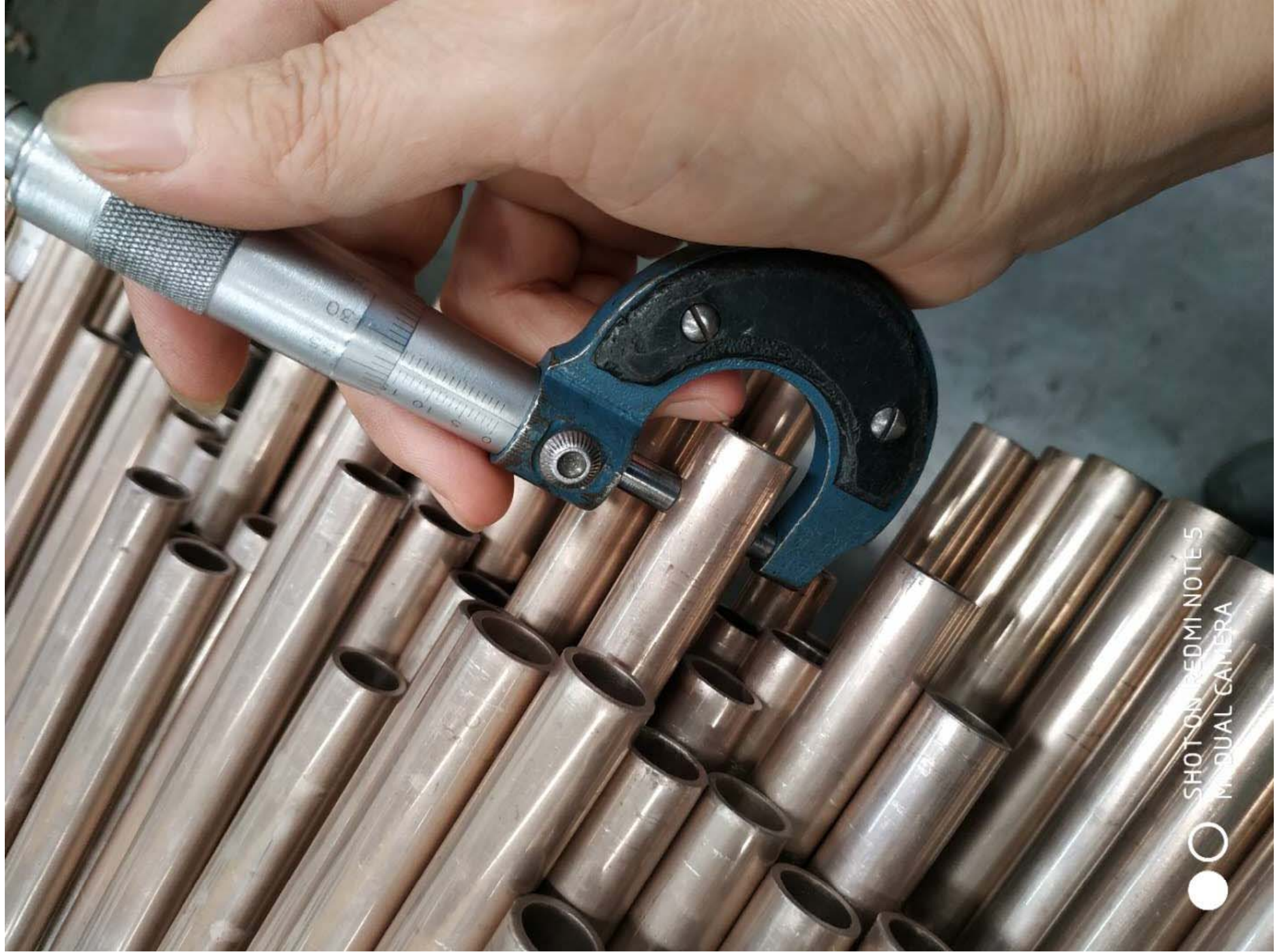


150

Y中间回火
GB/T1527-2006

SHOT ON REDMI NOTE 5
MI DUAL CAMERA





SHOT ON REDMI NOTE 5
MANUAL CAMERA



铜管拉伸试验报告

产品标准

ASME SB-111

客户名称

浙江宇鸿 3120071906

原始标距

50 mm

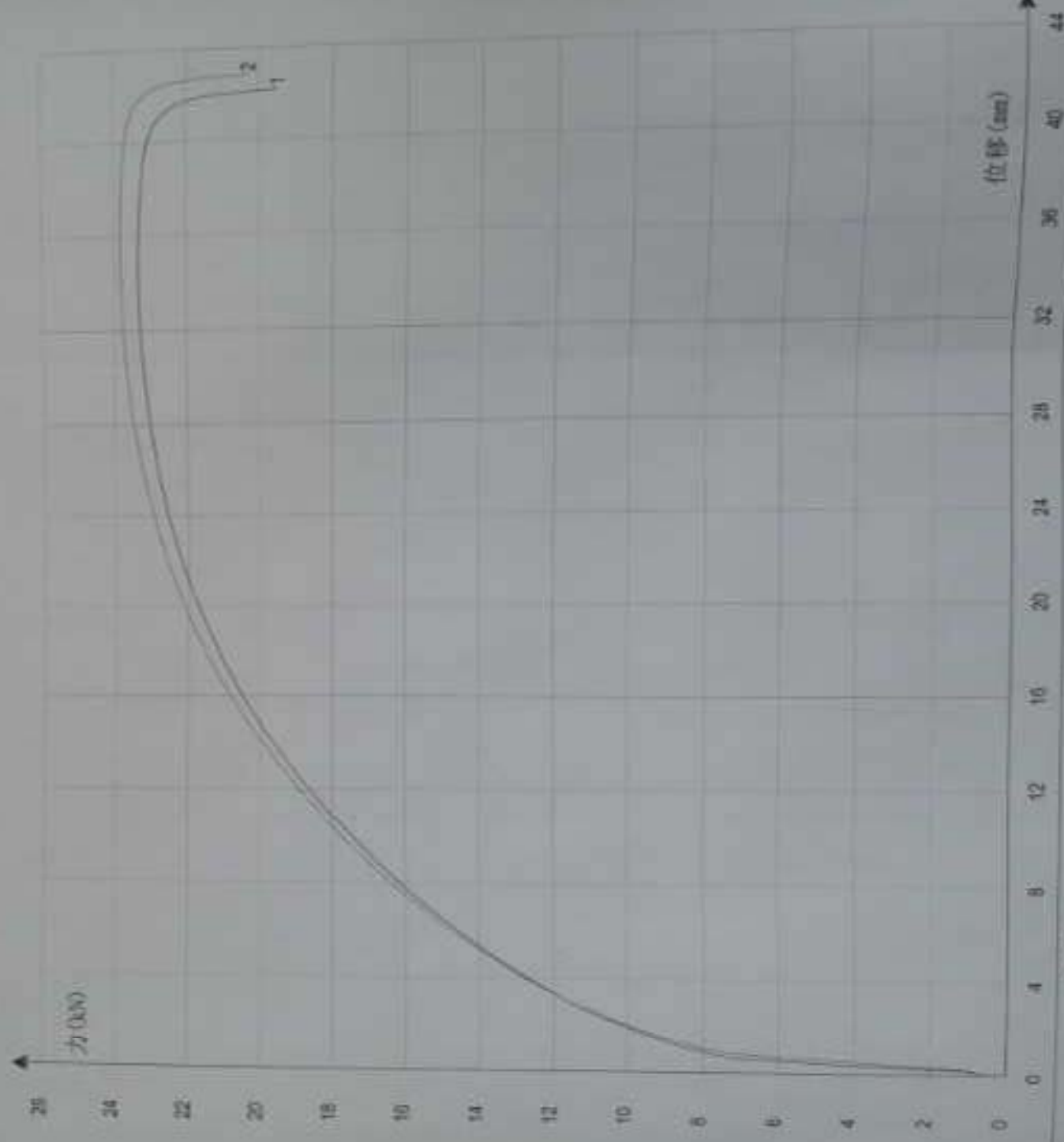
牌号及规格

C70600 15.88*1.65*1524 061

引伸计标距

50 mm

试样外径 (D) mm	试样壁厚 (t) mm	抗拉强度 (Rm) MPa	断后伸长率 (A) %	规定非比例延伸强度 (Rp) MPa
第 1 根 15.83	1.64	310	40.0	133
第 2 根 15.83	1.64	326	40.0	105





SHOT ON REDMI NOTE 5
MI DUAL CAMERA









6 7 8 9 150 1 2 3 4 5 6

SHOT ON REDMI NOTE 5
MI DUAL CAMERA





36X70600A

类型校正含量

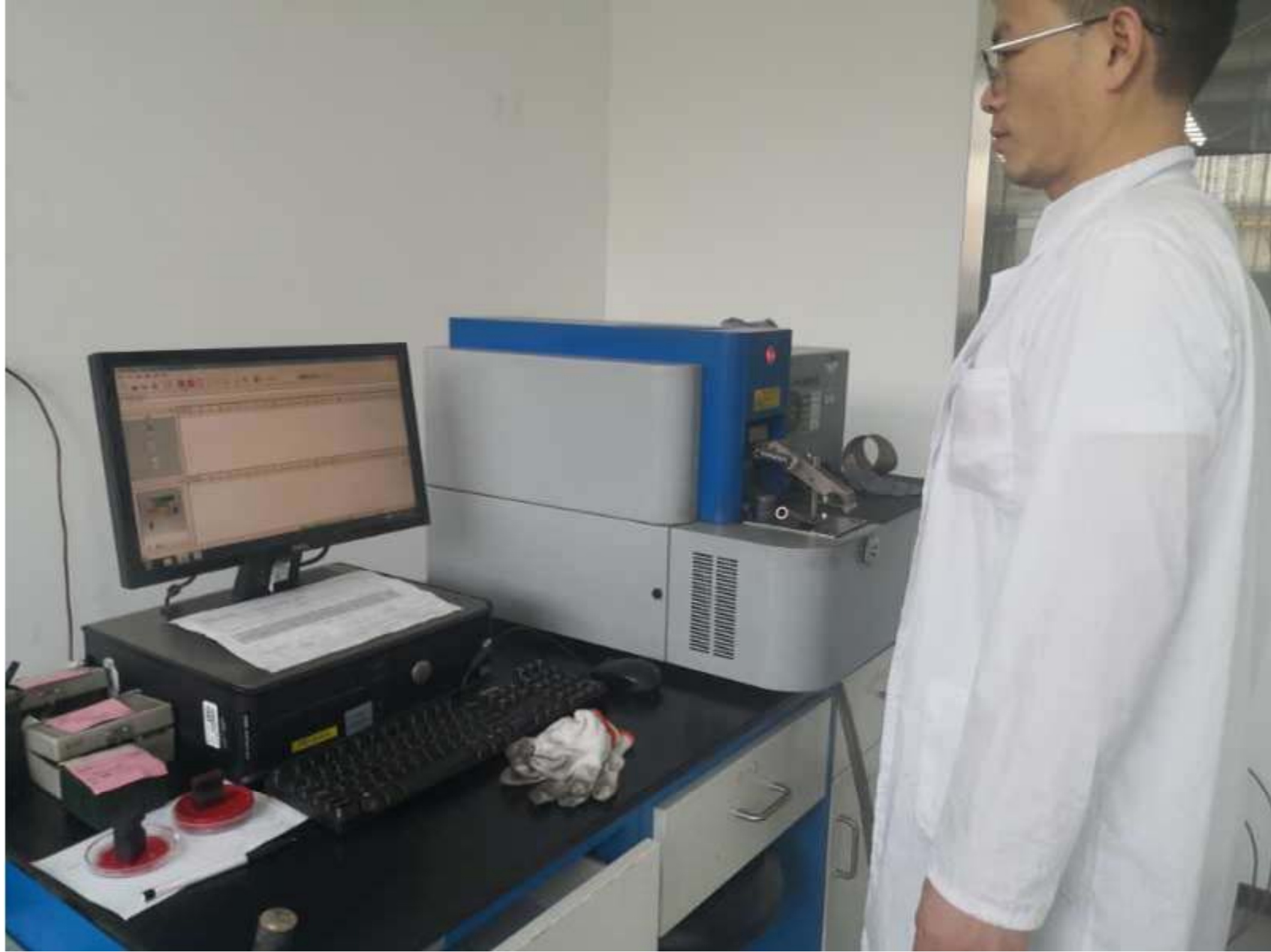
样品	Zn	Pb	Sn	P	Mn	Fe	Bi	Si	Hg	Cr
	%	%	%	%	%	%	%	%	%	%
1	0.0201	0.0053	0.0013	0.0037	0.755	1.21	10.43	< 0.0010	0.00053	0.0112
2	0.0191	0.0054	0.0013	0.0035	0.754	1.20	10.45	< 0.0010	0.00054	0.0099

样品	Bi	Cu	S	C	B	Ti	Nb	Cu
	%	%	%	%	%	%	%	%
1	< 0.0010	* 0.0058	0.0046	0.00097	< 0.00050	0.0021	< 0.0010	87.3
2	< 0.0010	0.0054	0.0046	0.00099	< 0.00050	0.0016	< 0.0010	87.3



SHOT ON REDMI NOTE 5
MI DUAL CAMERA





YUHONG ASME SB111 C70600 5/8INCHXBWG16X60INCH.HEAT NO.:3120071906
YUHONG ASME SB111 C70600 5/8INCHXBWG16X60INCH.HEAT NO.:3120071906

YUHONG ASME SB111 C70600 5/8INCHXBWG16X60INCH.HEAT NO.:3120071906
YUHONG ASME SB111 C70600 5/8INCHXBWG16X60INCH.HEAT NO.:3120071906

YUHONG ASME SB111 C70600 5/8INCHXBWG16X60INCH.HEAT NO.:3120071906

YUHONG ASME SB111 C70600 5/8INCHXBWG16X60INCH.HEAT NO.:3120071906

YUHONG ASME SB111 C70600 5/8INCHXBWG16X60INCH.HEAT NO.:3120071906

YUHONG ASME SB111 C70600 5/8INCHXBWG16X60INCH.HEAT NO.:3120071906

YUHONG ASME SB111 C70600 5/8INCHXBWG16X60INCH.HEAT NO.:3120071906





SHOT ON REDMI NOTE 5
MI DUAL CAMERA





SHOT ON REDMI NOTE 5
MI DUAL CAMERA



YUHONG ASME SB111 C70600 5/8INCHXBWG16X60INCH.HEAT NO.:3120071906

YUHONG ASME SB111 C70600 5/8INCHXBWG16X60INCH.HEAT NO.:3120071906

YUHONG ASME SB111 C70600 5/8INCHXBWG16X60INCH.HEAT NO.:3120071906

YUHONG ASME SB111 C70600 5/8INCHXBWG16X60INCH HEAT NO.:3120071906

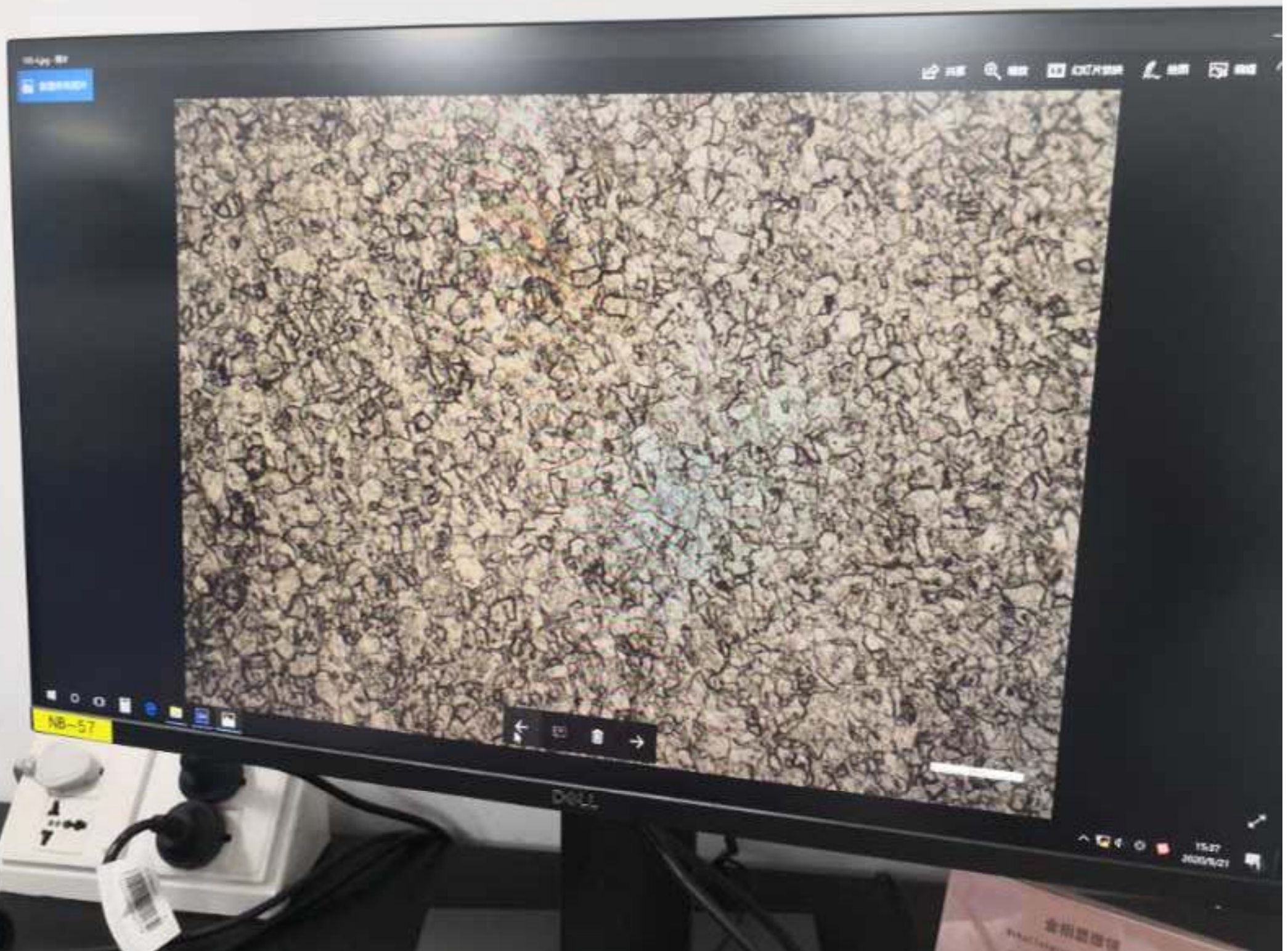
YUHONG ASME SB111 C70600 5/8INCHXBWG16X60INCH.HEAT NO.:3120071906

YUHONG ASME SB111 C70600 5/8INCHXBWG16X60INCH.HEAT NO.:3120071906

YUHONG ASME SB111 C70600 5/8INCHXBWG16X60INCH.HEAT NO.:3120071906

YUHONG ASME SB111 C70600 5/8INCHXBWG16X60INCH.HEAT NO.:3120071906

YUHONG ASME SB111 C70600 5/8INCHXBWG16X60INCH.HEAT NO.:3120071906



10:44 AM

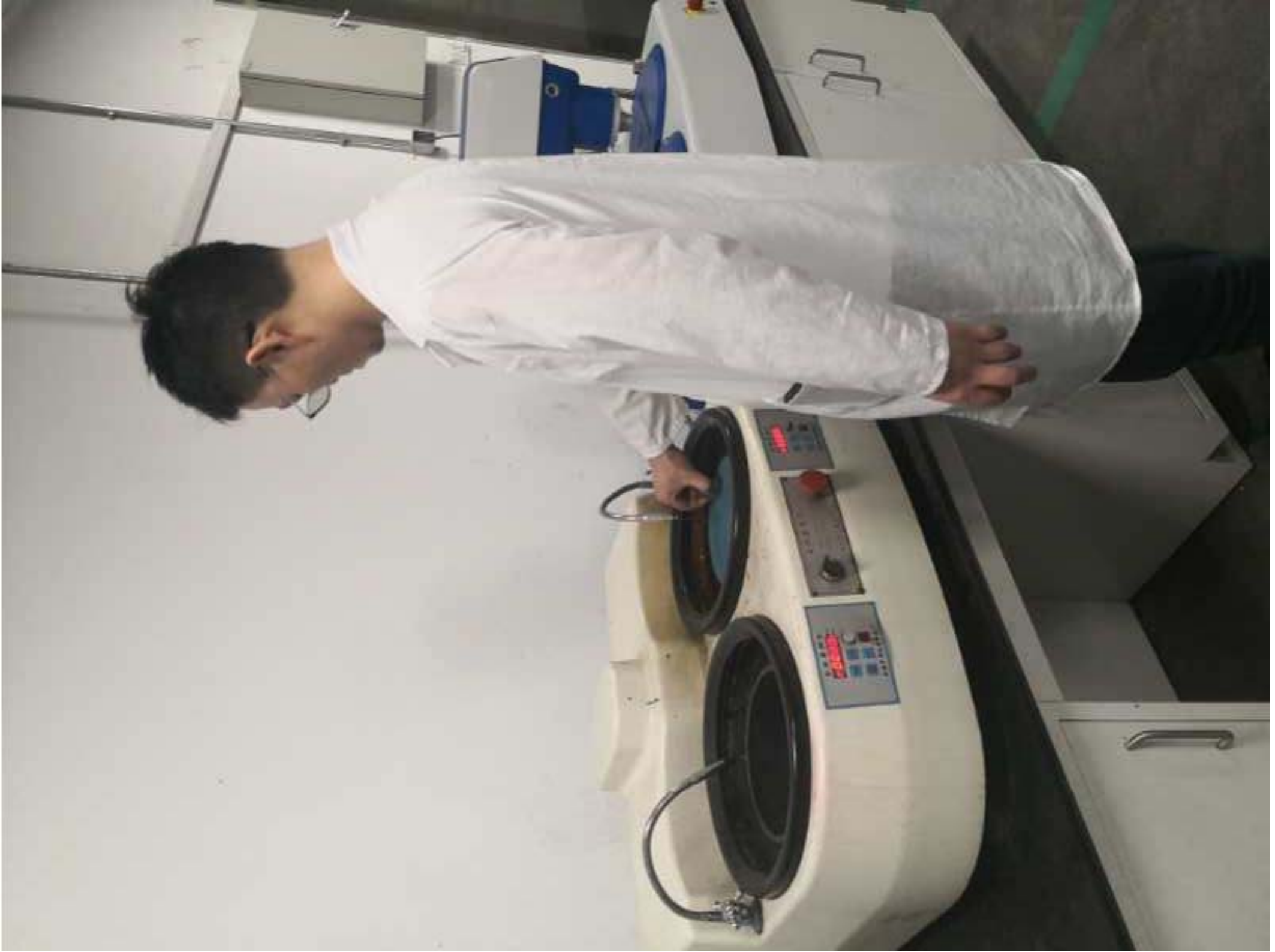
Navigation icons: Home, Search, Refresh, Print, Zoom, Full Screen, Close

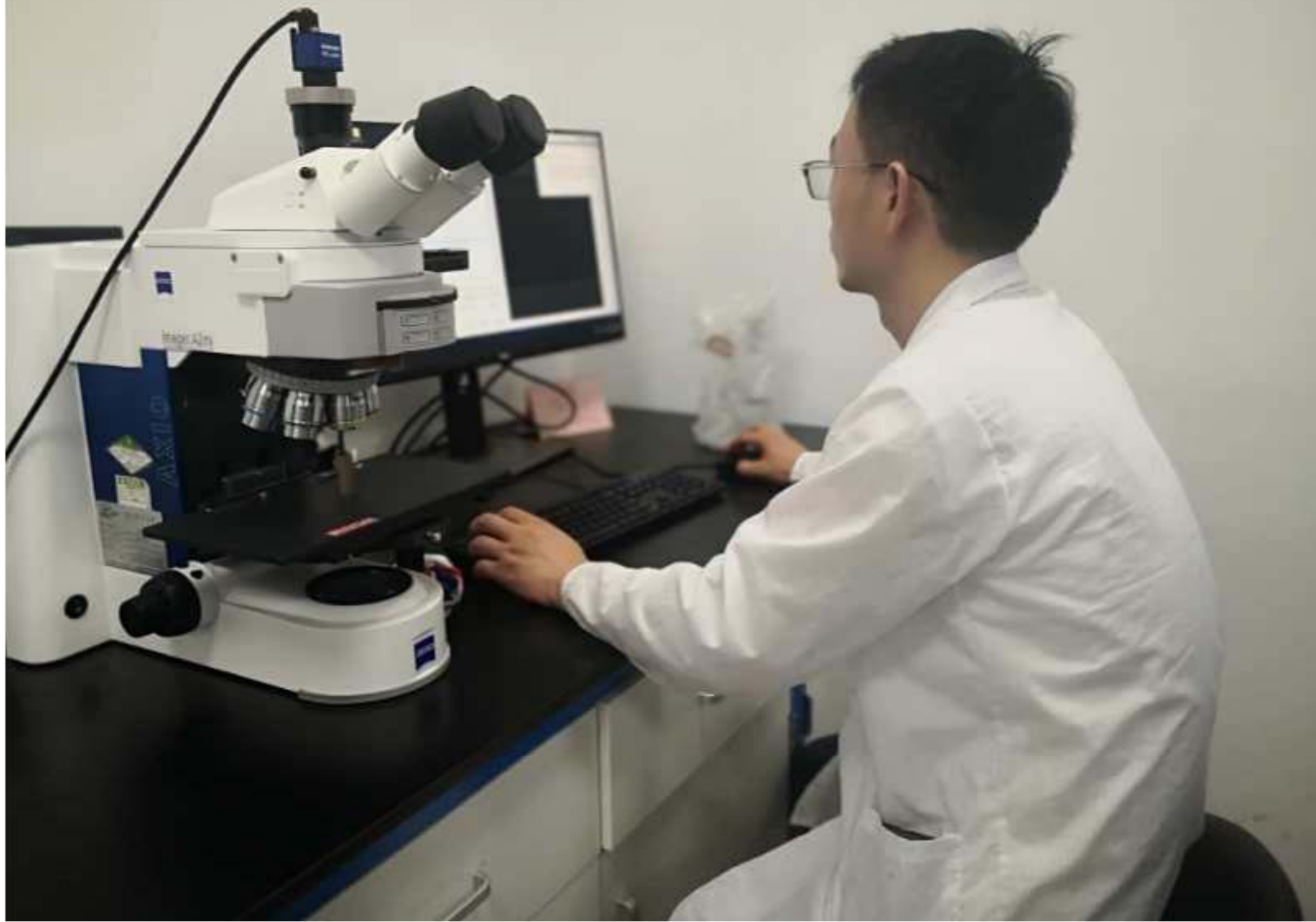
NB-57

Navigation icons: Previous, Stop, Next

System tray: 15:27, 2023/5/21

金相显微镜
PHOTOGRAPHY





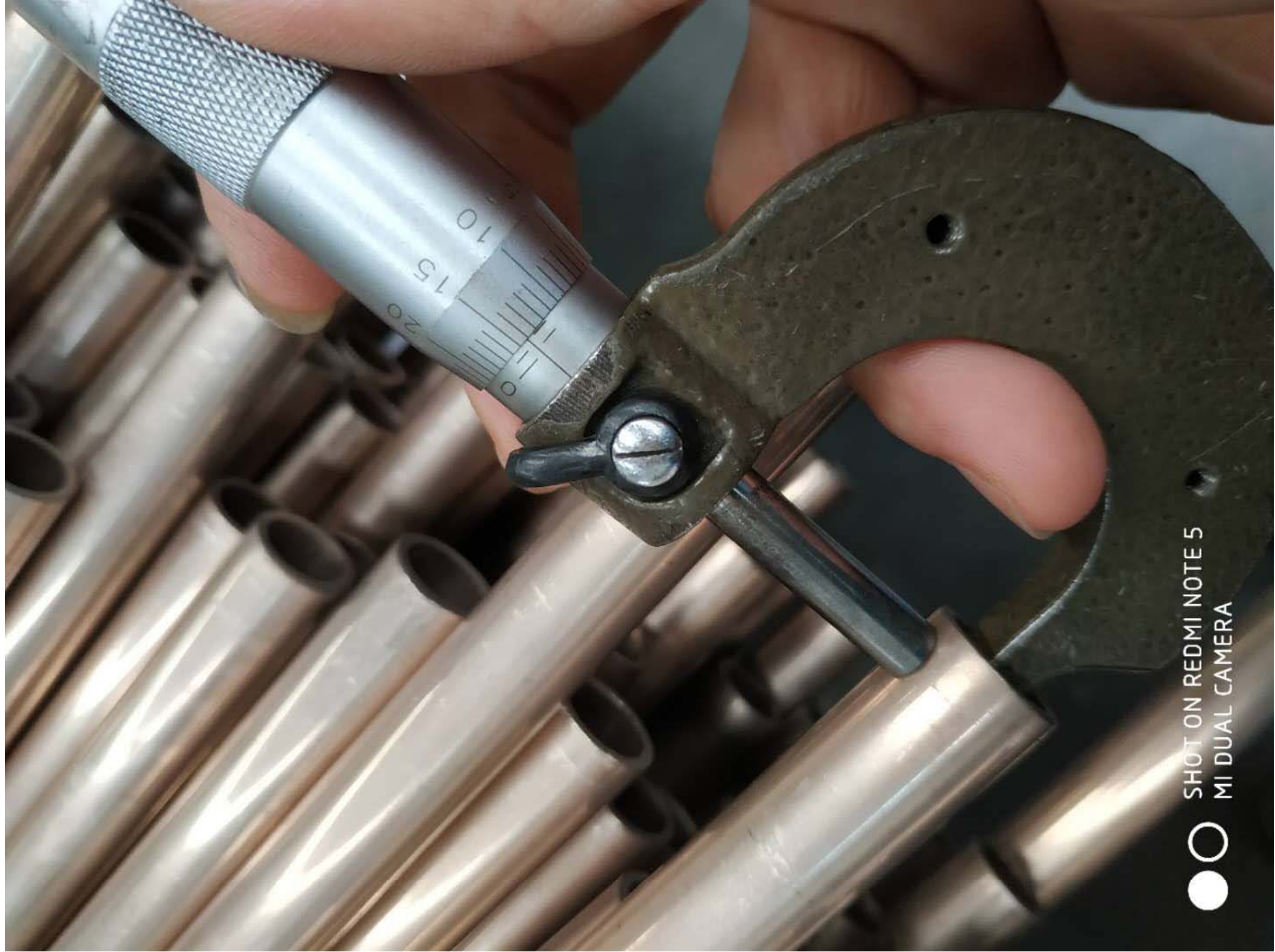


150

5 6 7 8 9 1 2 3 4 5

SHOT ON REDMI NOTE 5
MI DUAL CAMERA





SHOT ON REDMI NOTE 5
MI DUAL CAMERA





9/21/2020 1:03:28 PM

方法:
备注:
类型标准化日期:

Cu-40-F
Cu- Cu/Ni-alloy
36X70600A

类型校正含量

9/21/2020 1:03:07 PM

Sample Name:
3120071906

	Zn %	Pb %	Sn %	P %	Mn %	Fe %	Ni %	Si %
1	0.0201	0.0053	0.0013	0.0037	0.755	1.21	10.43	< 0.0010
2	0.0191	0.0054	0.0013	0.0035	0.754	1.20	10.49	< 0.0010

	Mg %	Cr %	Bi %	Co %	S %	C %	B %	Ti %
1	0.00053	0.0112	< 0.0010	0.0058	0.0046	0.00097	< 0.00050	0.0021
2	0.00054	0.0089	< 0.0010	0.0054	0.0046	0.00099	< 0.00050	0.0016

	Nb %	Cu %						
1	< 0.0010	87.5						
2	< 0.0010	87.5						